



Volume 82, Issue 5

February 2012

Susan McNamara, President

Linda Robertson, Editor

Sarah Dunn, Technical Advisor

AAUW Value Statement

By joining AAUW we belong to a community that breaks through educational and economic barriers so that all women have a fair chance.

Mission & Diversity Statement

AAUW advances equity for women and girls through advocacy, education, philanthropy, and research.

In principle and in practice, AAUW values and seeks a diverse membership. There shall be no barriers to members to full participation in this organization on the basis of gender, race, creed, age, sexual orientation, national orientation, disability, or class.

Mark Your Calendar

February 21, 4 pm, Branch Meeting

March 10, Interbranch Luncheon

April 10, 6 pm, Book Fair Supper & Sorting

April 13-15, State Convention

AAUW-Bethlehem Website

Bethlehem-pa.aauw.net

FACEBOOK Home:

AAUW Bethlehem PA

BETHLEHEM BRANCH

BETHLEHEM BYLINES

Bridging the Generation Gap:

**A Roundtable Discussion: Female Experiences in College Education
Then and Now**

**February 21, 2012
Moravian College, Main Campus
4 pm in the HUB**

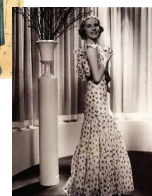
Being a female college student has never been easy, whether it's the year 1948 or 2012. On February 21 at 4 pm in the United Brethren Room of the Hauptert Union Building (HUB), six women will share their personal stories of living, learning, and surviving campus life. What challenges do/did women face in academics and in society? What are/were their biggest fears, setbacks, influences, and accomplishments? How has college life changed for females - for the better and for worse? And what commonalities bond us together as women in the world, regardless of age?

Come join us for questions and lively conversation and see what surprises you (or doesn't!) about women in higher education.

Several current Moravian students who are members of AAUW-Bethlehem's Student Affiliates will be speaking about college life today. From our own branch membership we have Emmeline Dimmick, who graduated from the Women's College of

Moravian College in 1948. At that time many students were commuters and had a 'day room' to relax in between classes. MaryPat Beebe attended the University of Pennsylvania, graduating in 1958. Shirley Daluisio is a 1968 graduate of Moravian College (she may still have her beanie).

We thank the members of the Board of Directors of AAUW-Bethlehem for serving as greeters.



Styles worn by co-eds through the decades.

Bacchae

Phyllis Wargo (610-797-9158)

On February 9 at Darlene Borst's with Louise Wisser as co-host. We will taste and study Rieslings. Anyone interested in joining the study group is invited.

Current Book Exchange

Marge Gotshall (610-866-7746) No meetings. Next rotation starts in March and we are seeking two new members. Each member buys a recently published book, which is passed throughout the group on a monthly basis.

The Out to Lunch Bunch

Jeanie Keller (610-865-3543) All AAUW members are invited to our luncheons. Our February hostess is Polly Hinder (610-865-0358). Call her to reserve your place by February 17 to meet for lunch at noon on February 21. We will visit the brand-new *That's Amore* restaurant at 2118 Schoenersville Road. Joseph Jurkivo formerly the chef at Mama Nina's owns *That's Amore*.

Diversity, Deeds and Dialogue

This inter-branch study group meets the fourth Wednesday of the month. On February 22, Jane Snyder hosts (610-782-9607) and we will continue to discuss *The Framework of Poverty* by Ruby Payne. For detail contact Randi at read4joy@verizon.net or phone 610-974-9711.

Mystery Paperback

Linda Robbins (610-264-4416) On March 27, Yvonne Payne (610-867-6575) hosts a discussion of *Rose* by Martin Cruz Smith.

President's Message from Susan McNamara

I wish each of you a most Happy and Healthy New Year. I hope, as well, that your December holidays were joyous.

In my September column, I asked that each member "make a 2011-2012 new year's resolution to be a 'first-timer' at some program, activity or event. Get a taste of something that you might not have tried otherwise. Dip into something that's unfamiliar..." As I look back over the first half of our year, I am pleased to report that many of you accepted this challenge...with enthusiasm. You turned out for a breakfast at *Starter's Grill*, learned about and tried some Tai Chi moves. You went to Moravian College for a packed house showing and discussion of the documentary film, *Miss Representation*, organized and led by our Student Affiliates. You gave up an October Saturday to attend the AAUW-PA District East meeting, learn about issues related to Marcellus Shale and get some AAUW-PA updates.

Beyond the programmatic, you willingly added your names to the AAUW-PA petition to Senator Toomey urging action on the Campus SaVE Act. And most recently members of the branch gave generously - far exceeding the goal of \$2,500 - to our Holiday Giving Back project in the amount of \$3,266 to the VNA Nurse-Family Partnership (NFP). And how terrific it is that we were joined by our Student Affiliates in their own NFP Drive to collect baby clothes and care items along with board books and checks totaling \$110.10. (I hear they set up a donation table adjacent a room where faculty were arriving for a meeting. How savvy are they?)

Behind the scenes, our technology maven, Cynthia Weber worked to take advantage of an opportunity for a redesigned and upgraded AAUW-Bethlehem web homepage with new features, including links to AAUW and AAUW-PA. If you haven't yet visited <http://Bethlehem-pa.aauw.net/>, please get on and take a tour. If you are a Facebooker who hasn't yet visited AAUW Pennsylvania, you might also want to dive in there.

While I'm sure that nothing will interfere with members' annual March and April dates with Book Fair or participation in a third annual Pay Equity Day event, our calendar also offers some more 'out of the box' options. Whether you were an autumn first-timer and are ready for an 'upgrade' or haven't yet tried something new, consider: a January mini-meeting; a return to Moravian's campus for the February program planned and hosted by the Student Affiliates; the Inter-branch luncheon with a dynamic speaker from AAUW-National; a once-in-a lifetime 50th Book Fair Anniversary Celebration Luncheon. Ready for a spring get-away? Why not include a weekend in Pittsburgh for the AAUW-PA Convention in Pittsburgh in April? Want to get some exercise while supporting good causes? Join our students in their Take Back the Night march and speak-out, and/or run—well, maybe, just walk—with us and member Stacey Zaremba, President of the YWCA Board and faculty advisor for our students, in the YW's spring Race Against Racism. I look forward to joining you all during these next months.

Susan McNamara

Public Policy

I WILL BE HEARD — VOTER EDUCATION

Compiled by Bernie Gardiner

Take Action! Tell your senators to co-sponsor the bill to reauthorize the *Violence Against Women Act*. The legislation includes new improvements, including some aimed at ending sexual violence on campus.

Public sector layoffs and school support staff layoffs in New York City in October had a severe impact on black women who lost most of those 642 jobs, outsourced to private contractors.

The Department of Labor reported that men got two out of three new jobs last year...1.28 million men; 600,00 women hired. AAUW supports creating jobs for women that include training as well as pay equity...jobs that provide economic security.

The Year of Reproductive Rights Rollbacks

AAUW supports the right of every woman to safe, accessible, affordable, and comprehensive planning and reproductive health services. States have enacted 80 laws restricting access to reproductive health care in 2010, according to the Guttmacher Institute.

The Obama Administration Announces a "National Action Plan on Women, Peace, and Security"

Implementation of a new plan to help protect women in conflict zones includes ensuring safe and equitable access to humanitarian aid and strengthening gender violence prevention efforts. Amnesty International estimates that 90% of casualties in modern warfare are civilians; of these 79% are women and children.

Debunking Myths about Social Security

The Economic Policy Institute's research describes the trust fund set up in the early 1980s, specifically in anticipation of the Baby Boomer retirement. "The trust fund will keep growing for another decade to around \$3.7 trillion, enough to last through the peak Boomer retirement years".

A myth is that benefits are generous. Benefits are modest and shrinking. The average retirement benefit is \$14,000 a year.

Another myth is that Social Security costs are escalating out of control. Costs are projected to rise from roughly 5-6% of GDP before leveling off". Earnings above \$106,800 are not taxed.

Please look at the AAUW web site for more information about Social Security and to Take Action! Ask your senators to help strengthen Social Security by cosponsoring the Keeping Our Social Security Promises Act (S.1558). (See sidebar on page 5 for more.)

If you have questions, contact connect@aauw.org or call 800-326-2289 between 10 am and 5 pm Monday through Friday. If I can help, e-mail me, Bernie Gardiner, at bnkgardiner@rcn.com or call me at 610-861-2925.

Paperback I

Norma Ferguson (610-515-1901) On February 16 at 7 pm Marie Boltz (484-851-3435) will host us as we discuss *Shanghai Girls* by Lisa See.

Paperback II

Debbie Spinney (610-865-4843) On February 20 at Lynda Schoeninger's at 7:30 pm we will discuss *Major Pettigrew's Last Stand* by Helen Simonson. New members welcome.

Paperback III

Barbara Myers (610-867-5222) On February 8 at 1pm, Myrna Sims hosts a discussion of *Dreams of Joy* by Lisa See. On March 7, Yvonne Payne hosts a discussion of Daniel Defoe's classic *Moll Flanders*. New members welcome.

Going Places Group

For reservations or information call Yvonne Payne at 610-867-6575.

From the Study Group Chair

Is anyone interested in starting or participating in a new study group (needlework, movie/cultural program outings, non-fiction book group, etc.)? Although we call them study groups, I'm wondering if anyone would like a more physical activity, such as a walking group? Email oconneen@me.com Thanks. Olga Conneen

Want to Play Bridge?

If you are interested in playing monthly bridge with AAUW, contact Shirley Daluisio as soon as possible at 610-866-7919. We are investigating meeting at Wegmans, route 512, and - after having our individual lunches on the second floor - playing bridge.

Need a ride to Meetings?

We want all interested members to be able to come to the general meetings so if you need a ride, call and we will match you with another member from your geographic area who has volunteered to provide rides. (One of our volunteer drivers is Shirley Daluisio in the northeast.) Call Yvonne Payne at 610-867-6575 and she will arrange pick up for you.

Exercise in a New Year

At our November branch meeting, speaker and Tai Chi master Brian Kunsman offered each of us three, free Tai Chi lessons! Linda Zimmerman, Myra Jones, and Linda Robbins took up his offer and had great fun in December. Call Brian at 610-865-3419 and sign up for a 9 am Saturday morning class at the Bethlehem Kung Fu Center, 819 Broadway, Bethlehem 18015.

Branch Sympathies

To the family of Pat Hunter who died under hospice care December 23, 2011. Services to be held later this spring.

AAUW-PA President
Margaret McGrath
mcgrathaauwpa@gmail.com

AAUW Help Line
800-326-2289
10 am to 5 pm
Connect@aauw.org

Association Website

www.aauw.org
AAUW-PA Website
www.aauwpa.org

Book Fair

Looking forward to the 50th Anniversary & Another Successful Year

This is an exciting year to be co-chair of the Book Fair and I am looking forward to the February 16 Captains' meeting (1pm) at my home. We will review past and future policies, new sorting signs, assignments and responsibilities, and ways in which we can honor and thank the community for all its support over the last 50 years.

We will have TV coverage on RCN. DeDe Laver, one of our Book Fair community volunteers, arranged for Book Fair volunteers to appear on a program hosted by the Reverend William J. Kuntze called "Taking the Initiative". Watch for details in the March newsletter.

Book marks and fliers will be available at the February branch meeting and the captains' meeting.

New volunteers are always welcomed and encouraged and, if you don't call us, we'll call you. Please call with any new or old ideas, thoughts, or suggestions. We are all in this together and every new idea makes the task easier and more fun.

Linda Robbins

610-264-441 or Lrob164832@aol.com

Mary Anne Mitrísín

610-837-7693 or Mitrísín@rcn.com

AAUW-Bethlehem Announces New Website

Check Us Out and Make Suggestions

A perk of our branch's affiliation with AAUW-National is having access to a design consultant, who helped create our new website. Please explore these new web pages and send Cynthia Weber, our new webmistress, any thoughts, comments or ways to make the information and layout more interesting. Contact her at Cynthia@acweber.net or 610-837-9615.

The web address is: <http://bethlehem-pa.aauw.net/>

As Cynthia develops the site, we will be able to register for programs, download forms, and access a common calendar of events for all the Lehigh Valley branches of AAUW.

We thank Sue Pettit for her many years of service as our branch's first webmistress. When Sue took on the task of creating, with Dave Boltz, our website manipulating data and adding or deleting information was far from easy. She overcame significant technical difficulties, creating an attractive sited that was visited by many.

AAUW-Bethlehem Members *Give Back* Nurse-Family Partnership Philanthropy

At press time, 69 of our members have donated a total of \$3,266 to support the literacy program of the Visiting Nurse Association of St. Luke's Nurse-Family Partnership (NFP) project. Our Moravian College Affiliate student members contributed an additional \$110.10 as well a collection of much-needed baby care items.

In the three years that Branch members have supported the Giving Back Holiday Project, we have collectively contributed \$9,221 to identified charities.



Honorary chair Louise Wisser presented checks totaling \$3,266 to Sara Klingner, RN, program manager for the NFP. If you would like to contribute, send your check to treasurer Myra Jones (phone 610-865-3419).

Photo by Myra Jones



Moravian College Student Affiliate member Katelyn Cohen with donated cash and baby items.

Photo courtesy VNA

Economic Policy Institute Publishes "Top Ten Lies about Social Security"

With presidential candidates and others targeting Social Security (SS), the Economic Policy Institute published an article debunking some of the 10 most common misunderstandings or myths about SS. It addresses confusion over the size of benefits, the strength of the trust fund, and program costs. AAUW believes that it is vital to women's economic security to provide for the long-term solvency of SS and to maintain its current guaranteed benefits. The current SS system is more than a retirement program; across the lifespan, it is one of the most successful anti-poverty programs in U.S. history, providing benefits to many children, disabled workers, surviving spouses, and retirees. Older women especially benefit greatly from this program, since many depend on SS as the primary source of retirement income. Ask your senators to strengthen SS by cosponsoring the *Keeping Our Social Security Promises Act* (S. 1558).

New Sick Leave Law in CT

Connecticut has a new paid sick days law, guaranteeing countless service workers the ability to accrue paid leave to use for their own illness or to care for a sick family member. Seattle, Connecticut, San Francisco, and Washington, DC recognize how important it is for workers to stay home when they are ill. These employees will no longer have to choose between a paycheck and their health — or the health of their colleagues and the public. During the H1N1 (swine flu) outbreak, the Institute for Women's Policy Research estimates that as many as 8 million employees came to work sick, infecting an additional 7 million. AAUW believes that a work environment that helps employees balance the responsibilities of work and family is good public policy. We support the *Healthy Families Act* (H.R. 1876/S. 984), which would implement paid sick days policies for all workers.

Officers

President Susan McNamara
610-861-8066
Smc8066@yahoo.com

Past President Cinda Jensen
610-866-0389
cindajen@aol.com

VPs/Program
Joanne Wagner 610-258-9259
jmfwagner@live.com

Linda Zimmerman 610-866-7319
T2Lzimmerman@ptd.net

VP/Membership
Yvonne Payne 610-867-6575
paynespitzer@hotmail.com

Secretary Mary Anne Mitrisin
610-837-7693
Mitrisin@rcn.com

Treasurer Myra Jones
610-865-3419
mejones@entermail.net

Committee Chairs

Book Fair 50th Anniversary
Nancy Disario 610-867-8533
jdisario@hotmail.com

Karen Donald 610-746-0337
kdonald@ptd.net

Calendars Marge Gotshall
610-866-7746
Geeg@mymailstation.com

Historian Joan Jones
610-867-0151

Nominating Sandy Utley
610-867-1893
sutley@ptd.net

Nominating Committee Report

The Nominating Committee, consisting of Sandy Utley (chairman), Marge Gotshall, Linda Robertson, Randi Blauth, Louise Wisser, Yvonne Payne, and Shirley Daluisio, met in November and December 2011 and proposes the following slate for the 2012 -2014 term of office:

President: Randi Blauth - "Growth, community, and friendship: these are what AAUW means to me. I am a life-long learner. I hunger for new ideas and new paths, pushing away my fears and stepping out of my comfort zone and out of the box as best as I can.

"As I considered standing for president, I realized that everything I've done in the past has led me to this point in my life. I've always been a big reader and had curiosity. I've been a reading tutor, a women's group peer facilitator, (finally) finished my degree in education, served on the board of directors of my temple for six years, ran the library for the temple, trained with the National Coalition Building Institute to put words into action, and am an Orton-Gillingham tutor. As a wife and mother, I did all of this. Most of my interests are about education, service, and community.

"When I graduated college, one of the first things I wanted to do was join AAUW. My mother had been a member and I too was looking for a women's organization where I would find camaraderie, education, and service to the community.

"Look what I found! Our branch has certainly changed over the ten years I've been a member. We've offered programs that have made us think: Marcellus Shale, Nepal, and diversity issues. Our study groups are growing and widening our horizons whether we're interested in reading, travel, or wine! We've exercised together (Tai Chi) and gone to the movies together (The Help and others). We've partnered with the YWCA for the Race Against Racism, have a representative on the YW board, and we've worked closely with our sister branches in the Lehigh Valley.

"Our branch has a wonderfully successful Book Fair whose proceeds go toward college scholarships for high school seniors and women. Through our work at the annual Book Fair, we've met and made new friends and feel a part of something bigger than ourselves. Our *Let's Read Math* group goes into the community and stimulates children's math abilities. Members of the community attend our diversity programs and we have established a meaningful relationship with Moravian College. Our student affiliate chapter at Moravian is a wonderful group of young women who can lead the way in women's issues, or any issue, now, or in the future. Just think about the great job they did presenting the movie *Miss Representation* and the stimulating conversation they led after the movie or their Pay Equity Day project.

"And lastly, I've found friendship. I've found women with like minds and not like minds who enjoy each other's company, usually over food!

"I want to continue our traditions while urging us forward to forge some new paths, too. We'll do it together. Think big. What interests you? What more can we do to help women and girls?"

Nominating Committee Report Continued

Co-Vice President, Program: Olga Conneen - Olga grew up in Allentown and attended public schools there with our own Mary Anne Mitrison, who got Olga involved with Book Fair. Olga belonged to AAUW-National before joining our branch. She earned a bachelor of arts degree from Penn State University and a master's of library science from Rutgers University. She worked for 20 years at the Bethlehem Area Public Library, most of them in the children's department. She then served as the director of library services at Northampton Community College for twelve and a half years, retiring in 2010. During her library career, she served as president of the Pennsylvania Library Association, a statewide organization of public and academic librarians. Her hobbies are reading and gardening. An unusual job early in her life was framing miniatures, an art she learned from her husband's late aunt artist Jane Conneen. Olga's past work involved meeting many interesting people, and serving the community. She feels AAUW will offer the same opportunities.

Co-Vice President, Program: Trisha Moller - Trisha is a Jersey girl from Rahway. She earned a bachelor of arts degree in mathematics from the College of New Jersey (1997) and continued at Lehigh University, earning a master of arts degree in mathematics (2000) and a PhD (2004). She has worked for AT&T and as a professor of mathematics at both DeSales University and Moravian College where she now serves as an adjunct. She is married to Mike Fraboni and they are the parents of boys ages three and a half and one and a half. Trisha is on the executive board of the Eastern Pennsylvania and Delaware (EPA DEL) Mathematics Association of America. She enjoys arts and crafts, drawing, and sewing. Trisha serves as branch liaison to Moravian College, writes *Tech Talk* for the newsletter, and is a presenter in the classroom with *Let's Read Math*. "AAUW keeps me connected on a global and local scale for women's issues. From our group, I have developed friendships through the generations both professionally and personal. AAUW lets me be myself, 'me' as well as wife, mom, and teacher."

The following have been nominated to be the 2012 - 2014 members of the Nominating Committee: Susan McNamara, Karen Donald, Judy Lappen and Phyllis Wargo. Yvonne Payne will serve as committee chairman. We will hold the election of officers at the branch meeting on April 10.

*Sandy Utley, Chair
Nominating Committee*

From Left: Trisha,
Randi & Olga



Committee Chairs

Book Fair
Linda Robbins 610-264-4416
Lrob164832@aol.com
Mary Anne Mitrison
610-837-7693
Mitrison@rcn.com

College/University Relations
Trisha Moller 610-758-8263
trisha@fraboni.net

Communications
Linda Robertson 610-865-2087
LCRob123@PTD.net

Diversity Randi Blauth
610-974-9711
read4joy@verizon.net

Educational Foundation and Public
Policy
Bernice Gardiner
610-861-2925
bnkgardiner@rcn.com

Information Technology
Cynthia Weber 610-837-9615
cynthia@acweber.net

Scholarships/Bylaws
Fran Bentkowski 610-866-7462
fbentkowski@verizon.net

Study Groups
Olga Conneen 610-691-5371
oconneen@me.com

Yearbook
Shirley Daluisio 610-866-7919
budshirl@hotmail.com

Use Survey Monkey to Vote on ByLaws Change

The Board of Directors proposes adding a Branch position of President-Elect. A paper ballot is included for all members receiving a paper newsletter. Electronic readers will soon get an email asking you to vote on an AAUW-Bethlehem Bylaws Change. Please take two minutes and reply using *Survey Monkey* as soon as you can (**the reply deadline is January 27, 2012**). Using this instrument saves the branch the cost of postage and printing. Thank You.

Nurse-Family Partnership

Featured in NYT Column

On January 7, 2012 columnist Nicholas Kristof, in a piece titled *A Poverty Solution that Starts With a Hug*, began with: "Perhaps the most widespread peril children face isn't guns, swimming pools or speeding cars. Rather, scientists are suggesting that it may be "toxic stress" early in life, or even before birth." Kristof highlights the work of the Nurse-Family Partnership, our 2011 Giving Back charitable recipient agency. "One successful example of early intervention is home visitation by childcare experts, like those from the [Nurse-Family Partnership](#). This organization sends nurses to visit poor, vulnerable women who are pregnant for the first time. The nurse warns against smoking and alcohol and drug abuse, and later encourages breast-feeding and good nutrition, while coaxing mothers to cuddle their children and read to them."

March Interbranch Luncheon

Sponsored By
Allentown, Bethlehem, Easton and Pocono Branches of AAUW

Saturday, March 10, 2012 at 11:30 am

Northampton Country Club

5049 William Penn Highway, Easton PA 18045

Gateway to Equity Awards



Our speaker Lisa Maatz is the Director of Public Policy and Government Relations at the American Association of University Women. As its top policy adviser, Maatz works to advance AAUW's priority issues on Capitol Hill and in the White House. She is a sought-after speaker across the nation and on Capitol Hill, and leads several coalitions working to advance opportunities for women and girls. Recently featured in the book, *Secrets of Powerful Women*, Maatz has developed a reputation for her strategic approach to legislation and advocacy. She is a Phi Beta Kappa graduate of Ohio University, has two master's degrees from Ohio State, and holds an adjunct appointment with the Women and Politics Institute at American University.

Menu Choices

Oriental Chicken Salad

Trio Salad Plate (Chicken, egg & tuna)

Grilled Shrimp Caesar Salad

Includes vegetable soup, roll, beverage, chocolate mousse and cookie
\$25/person

Directions: From Allentown, Bethlehem or Easton: follow I-78E to PA-33N (Exit 71). Take Wm. Penn Highway exit and turn right for 1/2 mile. From Pocono: follow PA-33S to Wm. Penn Highway. Turn left for 1/2 mile. Northampton Country Club is on the left.

Reservation Deadline: **March 3, 2012** Return to Susan Nenstiel, 2889 Aronimink Place, Macungie PA 18062. (Phone 610-965-0663) Make check (\$25) payable to AAUW- Allentown.

NAME(S) (Print): _____

BRANCH: _____ PHONE: _____ EMAIL: _____

ENTRÉE: Chicken Salad _____ Trio Plate _____ Shrimp Caesar _____

CELEBRATING 50 YEARS of Book Fair

From Main Street to Broad Street to Illick's Mill Road, AAUW-Bethlehem Book Fair has evolved and thrived. On March 30, 2012, we will celebrate our 50 years of Book Fair with a luncheon at *Hampton Winds* of Northampton Community College. You will be receiving a detailed invitation in the mail. If you have any special memories or thoughts about Book Fair, we would like you to send them along with your response so that we could share them at the luncheon. Please join us for this special celebration.

Next month we will tell the story of when and where the Book Fair was held, who played the important roles in making it a success, and how we used the proceeds totaling more than \$640,000 from the first 49 years.

Karen Donald, 610-746-0337

Nancy Disario, 610-867-8533



From left: Mrs. Donald Fraser, Miss Amy Preston, Mrs. B. Ellis Service and Lynn Heller, a student at Moravian College.



From left: Mrs. C.A. Moore, Mrs. Harry Dougherty, Mrs. Thomas Jensen (that's Cinda!), and Mrs. Truman Frey.

Photos scanned from archived news clippings by Sue Pettit

Trisha Moller Keeps Busy

Trisha Moller will serve on AAUW's International Fellowships Selection Panel. Her term runs from December 2011 - March 2012. This is the first time one of our branch members has been a participant. As a panelist, she will evaluate, rank, and recommend fellowship applicants.

In January she attended the national meeting in Boston for the Mathematical Association of America, as a representative of PA executive board.

In March, she will be a presenter at AAUW-Lansdale's Discover the Future, a STEM day for middle school students. She will lead five sessions, exploring the beauty and breadth of mathematics. This conference was her introduction to AAUW when she was studying at Lehigh University.

In September 2012 she has been asked to present her PowerPoint presentation "Top 10 Reasons Why I am a member of AAUW" to the Lansdale branch.

National Conference for College Women Student Leaders

On May 31-June 2, 2012 at the University of Maryland, College Park the NCCWSL proudly features Women of Distinction awardee Alison Cohen, president of Alta Bicycle Share, and Mayda Del Valle, artist and winner of the National Poetry Slam. To learn about scholarships see www.nccwsl.org

Save the Date

April 21 Diversity Workshop

Details to Follow

AAUW

Linda Robertson
1842 Kenmore Avenue
Bethlehem PA 18018-3339

Time Sensitive Material

Let's Read Math...An Update



Second graders using counters at Muhlenberg Elementary School.

The *Let's Read Math* team has been off and running this fall. Along with our colleagues from AAUW-Allentown, we presented lessons in 20 elementary classrooms including Muhlenberg and Ritter in Allentown and Miller Heights and Farmersville in Bethlehem. Nothing stops these women from teaching a wonderful lesson ...not even a power outage! Just as we began *The Greedy Triangle* at Ritter Elementary, the entire school lost its electricity. But did that stop us...absolutely not. With our toothpicks and marshmallows at the ready, we provided a fun geometry-based lesson to 25 second graders.

This past summer, thanks to a dedicated band of volunteers, the lesson plans were updated and a new story, *The King's Commissioners*, was added. And, all of our stories are now aligned to the Pennsylvania math standards.

Now, we are starting up again. Please consider volunteering for this wonderful community endeavor. The students and their teachers are very appreciative of our efforts. Joining us does not require a major time commitment. Your name is added to the mailing list and you come when you can. You do not have to know anything about math or teaching. You join in based on your comfort level. You might hand out name tags, help children into their "costumes" for the play, or supervise a small group making geometric shapes out of marshmallows and toothpicks.

This is a great group of women who enjoy fun and fellowship while working with children, and, when the timing allows, lunch out between classes! Interested in joining? Contact me at 610-866-7462 or fbentkowski@verizon.net